

STERIMIXER® TOUCH-SCREEN CONTROL BOX START-UP GUIDE



Introduction

The Sterimixer touch screen mixer control system is a U.L. listed NEMA 4X control box for controlling the mixer drive unit operation speeds. The control box features a color 3.8" touch-screen operator interface that provides mixing speed adjustment, feedback, and diagnostics.

Features

- U.L. listed
- NEMA 4X
- AC motor control with built in EMC filter and DB transistor
- Dedicated diagnostic screen
- Runtime and power consumption meter
- Password protected mixer model selection screen
- Quick disconnect motor cable
- Integrated impeller speed monitor system

Assembly

The control box requires appropriate power connections to be made to the enclosure prior to use. The incoming voltage is determined by mixer model size and can be 120, 230, or 460 Volts. Consult the schematic for particular model requirements. The electrical connection is to be performed by authorized personnel only. Please consult Steridose with any questions regarding power requirements or assembly.

STERIDOSE

Head Office

Himmelsbodavägen 7 · P.O Box 120 · SE-147 22 TUMBA · SWEDEN
Phone: +46-8 449 99 00 · Fax: +46-8 449 99 90
info@steridose.com · www.steridose.com

11-1431S

Regional Office

5020 World Dairy Drive · Madison, WI 53718 · USA
Phone: +1-608 229 5225 · Fax: +1-608 227 9599
info@steridose.com · www.steridose.com

To complete the electrical cable assembly the quick-disconnect motor cable needs to be securely attached to both the control box and drive unit. See figure below:

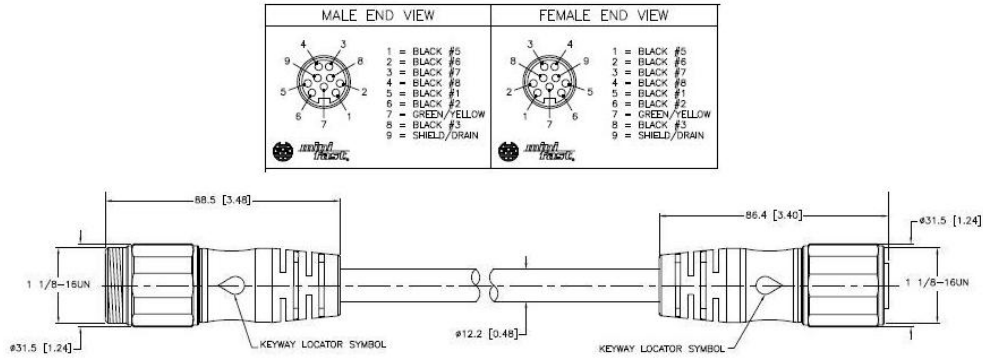


Figure 1: Drive Unit Cable

The male end of the cable plugs into the control box, and the female end of the cable plugs into the connector on the drive unit. Ensure that all connections are securely fastened.

Operation

Initial Power Up

To power the control box the red power disconnect handle on the front of the enclosure should be rotated clockwise to the “on” position. The screen will turn blue and begin booting up. Once the operation’s screen appears the unit is ready for use.

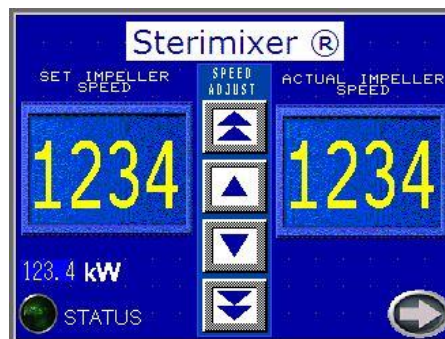


Figure 2: Operation Screen

STERIDOSE

Head Office

Himmelsbodavägen 7 · P.O Box 120 · SE-147 22 TUMBA · SWEDEN
 Phone: +46-8 449 99 00 · Fax: +46-8 449 99 90
 info@steridose.com · www.steridose.com
 11-1431S

Regional Office

5020 World Dairy Drive · Madison, WI 53718 · USA
 Phone: +1-608 229 5225 · Fax: +1-608 227 9599
 info@steridose.com · www.steridose.com
 Revision 1; 2011-06-30

Impeller selection

To verify that the proper mixer parameters are in place follow these steps:

1. Press arrow at bottom right hand corner of Operation screen, shown in Figure 2, until the Impeller selection screen appears.



Figure 3: Impeller selection screen

2. Press the “Impeller Select” button shown in Fig. 3.
3. Enter password: 5225.
4. Select Impeller from list accordingly (Fig. 4). Selection will turn green.



Figure 4: Impeller selection list

5. Exit by pressing exit button in upper right hand corner. Selected impeller is now active and displayed the box under Impeller Selected shown in Figure 3. Press the arrow in bottom right hand corner and you will return to the Operations screen.

STERIDOSE

Running the drive unit

With impeller selection verified and the mixer installed according to the Sterimixer Operations Manual the mixer is ready to be run.

Push the green start button on the front of the control box enclosure to start the motor. A green light will turn on, and the motor will ramp up to the indicated “set impeller speed” shown in the left window of the Operations screen.

The speed is changed by using the speed adjust arrow keys in between the two speed display readings on the Operations screen. The double arrow keys will change the speed in increments of 10 RPM, and the single arrow keys will adjust the speed in increments of 1 RPM.

To stop the mixer, press the red toggle button on the front of the control box enclosure. The green light will turn off and the impeller will decelerate to a stop.

Shutdown

A lockable disconnect is provided for applying lockout/tagout procedures during maintenance or troubleshooting.

Caution must be used as the DC bus voltage requires 10 minutes to discharge after disconnect is turned off. Do not work on equipment until drive has fully shut off as indicated in manufacturer operation manual.

STERIDOSE

Head Office

Himmelsbodavägen 7 · P.O Box 120 · SE-147 22 TUMBA · SWEDEN
Phone: +46-8 449 99 00 · Fax: +46-8 449 99 90
info@steridose.com · www.steridose.com

11-1431S

Regional Office

5020 World Dairy Drive · Madison, WI 53718 · USA
Phone: +1-608 229 5225 · Fax: +1-608 227 9599
info@steridose.com · www.steridose.com

Additional information

Diagnostic Screen

By pressing the arrow key in the bottom right hand corner of the Operation screen, the menus will toggle between the Operation Screen, Diagnostic Screen, and Impeller Select Screen. The diagnostic screen can be seen below:



Figure 5: Diagnostic Screen

Green lights will turn on/off as indicated to assist in any troubleshooting should an issue occur.

Operation Parameters

The operating parameters are shown on the Operation Screen. The default parameters are set corresponding to the recommended values by Steridose. These parameters may be adjusted under certain circumstances. Consultation should be made with Steridose prior to making any changes beyond factory defaults.

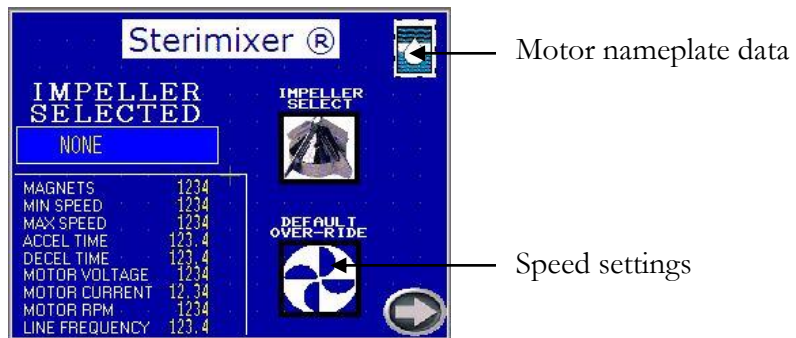


Figure 6: Operation Screen

STERIDOSE

If changes need to be made to motor nameplate data:

1. Press the Steridose logo in the top left hand corner.
2. Enter password: 5225.

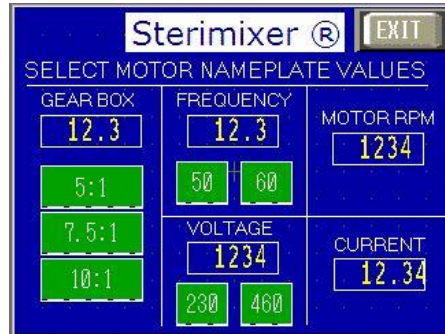


Figure 7: Motor nameplate values

3. Make appropriate selections as advised.
4. Press exit button. Updated values will now be shown in the Operations Screen.

If changes need to be made to speed settings:

1. Press the “Default Over-ride” button as shown in Fig. 6.
2. Enter password: 1122.

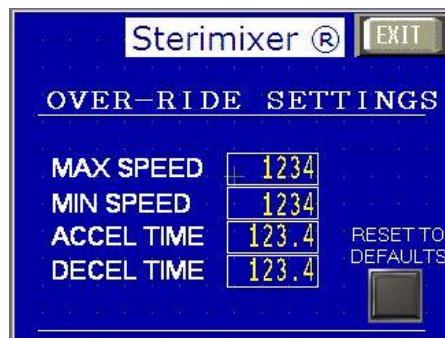


Figure 8: Speed Settings

3. Make appropriate adjustments as advised.
4. Press exit button. Updated values will now be shown in the Operations Screen.

Incorrect setup of parameters will result in incorrect operation.

STERIDOSE

Head Office

Himmelsbodavägen 7 · P.O Box 120 · SE-147 22 TUMBA · SWEDEN
 Phone: +46-8 449 99 00 · Fax: +46-8 449 99 90
 info@steridose.com · www.steridose.com
 11-1431S

Regional Office

5020 World Dairy Drive · Madison, WI 53718 · USA
 Phone: +1-608 229 5225 · Fax: +1-608 227 9599
 info@steridose.com · www.steridose.com

NOTE:

This screen is also used to return the values to their factory defaults. Pressing the “Reset to Defaults” button in the lower right hand corner will prompt the screen shown below in figure 9.



Figure 9: Return to defaults propt

Make desired selections, and press exit button on Speed settings screen to return to Operation Screen.

Security:

There are multiple levels of security. The passwords for these levels are as follows:

Level 3 – 1122 Level 4 - 5225

STERIDOSE**Head Office**

Himmelsbodavägen 7 · P.O Box 120 · SE-147 22 TUMBA · SWEDEN
Phone: +46-8 449 99 00 · Fax: +46-8 449 99 90
info@steridose.com · www.steridose.com
11-1431S

Regional Office

5020 World Dairy Drive · Madison, WI 53718 · USA
Phone: +1-608 229 5225 · Fax: +1-608 227 9599
info@steridose.com · www.steridose.com